



Albert City Threshermen & Collectors Show

2012 Official Show Guide

**Proudly hosting the 2012
Minneapolis-Moline Collectors
Summer Show**

August 10-12, 2012



Albert City Threshermen & Collectors Show

2012 Official Show Guide



The site as it appeared just five days before the 2010 show.

With a string of high temperatures in the upper 90's and no measurable rain for over a month, I couldn't help but think back to the show just two short years ago.

You could say we had an abundance of rain that year.

Just like the pioneers of yesteryear, the volunteers persevered, they pushed through it, pumping the water off the grounds and making adjustments to the activity line-up.

And, it was a great show.

Every year gives us challenges. Whether it is too much rain or too little; too hot or too cool. But the camaraderie, the friendships and the fun continues.

Once again, I offer my thanks to those who have shared their time, their talents and their stories.

See you at the show.

Connie J Reinert

Inside this Issue

- 3** Wiemers have a mixed antique collection
- 5** Twin City collector from Glenville, Minnesota
- 6** Maasdam to show Minneapolis-Moline Hi-Crops
- 6** Dennis Powers restores Case 30-60
- 8** Bellows to serve as feature parade marshals
- 9** Feldmans named parade marshals
- 10** Kids will enjoy the potato patch
- 12** Virgils make collecting a family hobby
- 14** Brief history of Minneapolis-Moline
- 16** Albert City Museum has large complex
- 19** Loren Book enjoys collecting Universals
- 21** Schedule of events
- 24** Sioux Central FFA takes on Grandpa's Barn
- 26** Swartzrock plans to exhibit 1943 Minneapolis-Moline Jeep
- 28** Former M-M engineer to exhibit
- 29** Ruble has passion for steam engines
- 30** Entertainment line-up
- 32** Sixtas will give corn sheller a workout
- 36** Moore to exhibit several M-M pieces

On the cover:

Aerial photo taken by Connie J. Reinert during the 2011 Show.
Gaylen Moore, Jerred Ruble, Harold Swartzrock and the Virgil family.

Published on behalf of the
Albert City
Threshermen & Collectors Association by
BEYOND BROKEN
Connie J. Reinert
34195 320th Street, Ruthven, IA 51358
Phone: 712-260-0468
connie@beyond-broken.com

Something for Everyone During the 42nd Annual Collectors Show

The Albert City Threshermen and Collectors Association welcomes the national Minneapolis-Moline Collectors for their summer show. Exhibitors will come from all over the U.S. to exhibit and demonstrate a large selection of Minneapolis, Moline Power, Twin City, and post-merger Minneapolis-Moline and Avery equipment.

Visitors will want to look for a few new events and exhibits during the show. One is the Threshermen's Tractor Ride on Thursday. The M-M Collectors will have a ride starting near Sutherland arriving at the show site about noon. At 1:30 p.m., the Threshermen's Ride will leave the grounds for stops at the Albert City Museum and the Railroad Museum in Marathon. The afternoon ride is open to all makes of tractors.

Visitors can get their questions about tractor electrical systems answered this year as Bob Virgil will hold a seminar complete with demonstrations.

New this year will be a talent show. The event will start at 3 p.m. on Saturday and features three age groups who will compete for cash prizes.

Children will enjoy the new potato patch on the south end of the grounds. At scheduled times, they can run out and gather up fresh potatoes to take home.

Bring your antiques or just enjoy watching during the An-

tique Appraisal Fair. The event will be held in the entertainment shelter on Saturday from 9 a.m. to noon.

There will be two parades this year. The Feature Parade for M-M exhibitors will be at 10:30 a.m. The Threshermen Parade for all exhibitors will be each day at 4:30 p.m.

There will be two tractor pulls. The Friday Night Fun Pull will feature M-M tractors and begins at 6 p.m. The Antique Amateur Pull will start at 9 a.m. on Saturday.

Field demonstrations will include corn shelling, combining, baling, disking, raking and threshing.

Regularly scheduled exhibits include a toy show, wood shop, wood carvers, a heritage doll show, quilt show, petting barn, arts and crafts, vintage military vehicles, antique cars and trucks, Ridge Runners, blacksmith shop, broom factory, flour mill, saw mill, school house, farm house, Svenska Stuga, horse activities and of course lots of food including home-made ice cream.

The 42nd Annual Threshermen and Collectors show will have an opening ceremony at 9 a.m. on Friday. Admission for those 12 years and older is \$7 per day or a three-day pass can be purchased for \$15. Children 11 and under are admitted free.

A complete schedule of events can be found on page 20-21.

Outstanding in Your Field!



When it comes to the business of farming, we're here to give you a hand.

Thanks, Threshermen for all of your hard work that goes into putting on this annual tradition.

Albert City
Phone: 712-843-2211

Marathon
Phone: 712-289-4401

Webb
Phone: 712-838-4321

Spencer
Phone: 712-262-3030

Community
State **BANK**

www.ecommunitybank.org

MEMBER FDIC

A Mix of Antique Machinery, Memorabilia, Toys and Antiques make up this Collection

Marlys and Maynard Wiemers of Gilmore City hold down the northeast corner of town with a few buildings to hold their collection of antiques giving them just enough room to play in.

Maynard started farming on his own in the 60's and bought his first tractor, a M-M 900 in 1969. He didn't start collecting tractors until he retired and he decided to collect M-M because it is more difficult to find.

Marlys and Maynard owned and operated Oaks Nursery in Gilmore City for over 30 years. They were followed in the business by their daughter operating it for another 10 years but they are now all out of the operation.

Maynard plans to bring a Model 1210 to the show. It has two 605 engines and he purchased it from a quarry. It was typically used to run cotton gins or irrigation systems. It can burn regular gas or LP. It doesn't have a radiator but instead has a tank with water to circulate and has water cooled manifolds.

The collection includes several other M-M tractors which he gets out each year for the town's annual celebration.

They also have a house filled with memorabilia and other antique items. Another shed holds a collection of gas cans and farm signs. And he has about 60 or 70 M-M farm toys that are not all on display.

"I collect anything with a crank," said Maynard as he described a large collection of antique kitchen gadgets—some yet to be identified.

The Wiemers have a son and daughter in the area. Their son, who is retired from the military, enjoys collecting antique items and going to flea markets.

"The fun of collecting is in the hunt," said Maynard. He is currently looking for a 4WD G1000 Vista. No doubt, one of these days he'll find the one he is looking for.



Maynard and Marlys Wiemers with a rare M-M implement sign from the 1950s.



A Model 1210 that will come to the show. It has two 605 engines and was typically used for irrigation. Also on the trailer is a self-propelled V4 engine to use with the Uni-Harvester.



A Uni-Harvester from the 1950s. It could use the same engine for all applications. They system was later bought by New Idea.

Stalcup Ag Service

Specializing in farm management, farm real estate, and rural appraisals since 1942

910 Flindt Drive, P.O. Box 67
Storm Lake, IA 50588
Phone 712-732-4811
Fax 712-732-7371
Email: stalcup@stalcupag.com

Twin City Tractors date back to 1910

Formed in 1902, Minneapolis Steel & Machinery Company provided structural steel for building bridges, water towers, and flour mills for Minnesota's largest city, Minneapolis-St. Paul, also known as the Twin Cities. MS&MC was also a contract manufacturer and engine supplier for several other businesses.

Between 1909 and the mid-teen's MS&MC supplied tractor engines for Reeves and Company, manufactured the 30-60 Case and the Bull tractors. In 1910 MS&MC worked with McVicker Engineering to develop the first of an impressive line of durable heavyweight gas tractors known as Twin City. A 15-30, 25-45, 40-65, and a 14 ton six cylinder 60-90 rounded out the heavyweight line-up. In 1914 the Twin City Twentieth Century tractor was produced for the Canadian market and was followed by an automotive styled 16-30. World War I put an end to outside contracts and the company concentrated on military munitions and continued development of a smaller tractor program.

One of the most significant developments in Twin City history was the release of the 12-20 in 1918. This 5,000 lb 340 ci., twin cam, sixteen valve, in-line engine, unit frame tractor had a fully enclosed transmission and final drive running in oil. This advanced machine may have been on the drawing



board as early as 1916. At that time nearly all other manufacturers made tractors with open gears mounted on basic channel frames. Twin City also entered motor truck production in 1919 with a 2 ton and 3 ½ ton.

MS&MC did not mass produce cheaply engineered tractors affordable to the small farmer. These machines were subject to severe duty, turning over vast sections of virgin prairie, building and maintaining thousands of miles of new roads for America's rapidly developing Twentieth Century. Twin City earned a solid, global reputation through world wide distribution and strategic dealer networks. Full service branch houses claimed their products were "Built to do the work – not to meet a price."

The successful 12-20 was copied in a "twice the size" 20-35 by 1920. This pair was grossly underrated and by 1926 they would become the 17-28 and 27-44 with virtually no changes in design. With the heavyweight line now out of production, a mid-sized 21-32 was added.

MS&MC survived the Depression following the war, However, with all this hard-earned success there was still one glaring omission. The company did not offer a line of tillage implements. John Deere had an impressive line of tillage tools and began production of a general purpose tractor. Massey Harris, Case, and Allis Chalmers had expanded into full line suppliers. International Harvester emerged as the dominant manufacturer after a favorable termination of Fordson in the famous price wars. Competition was fierce among leading manufacturers.

In an effort to ensure their survival, and become a full line supplier, MS&MC organized a merger in the spring of 1929, blending inventory and tooling with Moline Plow Company and Minneapolis Threshing Machine Company to become Minneapolis Moline Power Implement Company. Released just before the merger, the last models designed by Minneapolis Steel & Machinery Co. were the KT and MT. Minneapolis Moline assembled these Twin City tractors from 1929 through 1938, labeling many of them as MM-Twin City.

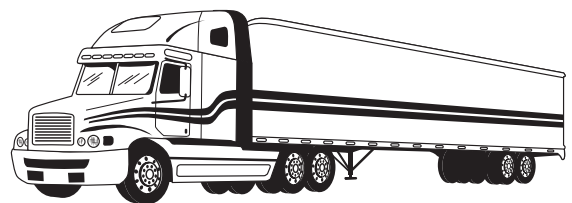
—Contributed by Tony Thompson,
<http://twincitytractors.tripod.com/>



Thank You

**Albert City Threshermen
and Collectors**

*for Hosting our
Summer Show!*



Repairing Medium and Heavy-Duty
Trucks and Trailers

Storm Lake Truck and Trailer

Phone: 712-732-6381

1223 E. Hwy. 7
Storm Lake, Iowa

A Twin City fan, Tony Thompson will Exhibit a Couple of His Favorites

Tony Thompson of Glenville, Minn. Will likely bring his restored 1928 Twin City 27-44 Road King to this year's show. He may bring others as well, but he doesn't usually decide until show time. Tony is an avid collector with such a great interest in Twin City that he maintains a website to help other enthusiasts gain correct information about the line. Visit <http://twincitytractors.tripod.com> for more details.

Tony claims to be an independent machinery specialist with over 23 years of experience in the tractor hobby. "I have restored and owned so many, that I can't recall all of them anymore," he said. "This all started because I needed an old tractor or two to use on my acreage. I was impressed with a Minneapolis-Moline loader tractor I had been using. I am a history lover, and that prompted me to examine the background of M-M and I became very fond of the Twin City line. I really like hand-start tractors and steel wheels. I do have some other tractors, but Twin City tractors hold my interest the most."

Tony attends a few collector shows each year and can expect to know other collectors there. "The Albert City show is managed very nicely and I tend to favor working shows because I restore tractors to a level where they can be used again for their intended purposes," he said.

"This hobby has stuck for me because so many of the people involved are from farming families or have rural backgrounds. This type of people tend to be raised with good moral ideals and positive work attitude. They make the very best friends and as I age I realize that this is the real payoff here. If you have people that care about you and you have learned to love others then you have true wealth and success as a balanced individual will be yours. The amount of money you encounter has little to do with success."

According to Tony, his family has also been touched by these good folks and



Tony Thompson and his daughter Paige with his restored 1928 Twin City 27-44 Road King.

they enjoy attending shows also. Tony has several Twin City tractors, some which have been beautifully restored and others mechanically restored but left in their working clothes.

"I like both. But, there is a new movement to restore untouched, original looking survivors without cosmetic refurbishing," he said. "Having a straight, correct old steel wheeled workhorse that runs and drives good, but retains its rusty colored patina or original bits of surviving paint color is rapidly becoming a desirable level of collecting that is more difficult to achieve than painting a tractor is!"

Please Be Safe!

We want your time spent with us to be fun and safe. Please help us by observing these common safety procedures. 1. Wait until a trolley stops before getting on or off. 2. Allow moving equipment and animals to pass. Do not walk or run in front of them. 3. Animals can be startled. Do not approach them. 4. Golf carts and ATVs yield the right-of-way to all others. 5. Most farm machines are designed to safely carry the operator only. Think safety first and if in doubt stay off. Thank you for helping make our show enjoyable for all.

—Albert City Threshermen
and Collectors Board

Buena Vista
Regional
Medical Center
www.bvrmc.org
Storm Lake, Iowa

Family • Courage • Choice • Community

Larry Maasdam enjoys Huge Toy Collection

Larry Maasdam of Clarion, IA started collecting toys in the late 1970s. He now has thousands of toys of all makes and models on display at his home and in a large display area at the Heartland Museum in Clarion.

Not only does he have a huge toy collection, but he also collects antique machinery, many that are Minneapolis-Moline. He will be bringing a few to the show this year: a 602 LP Hi-Crop, a 602 Diesel Hi-Crop and a Moline V.

He didn't start collecting tractors until about 1990. Larry enjoys both restored and unrestored tractors. His first tractor purchase was a John Deere 60. His specialty tractor is a Hi-Crop and he has about 90 in all makes.

"I guess I have a little bit of everything," said Larry.

Larry has a long history in the construction business specializing in trenching. The Vermeer trencher was invented by his father. At the age of 17, Larry bought his first Cat and farmed. In the mid-60's he went into fulltime construction with a focus on drainage and trenches. Over a period of 29 years he worked for five major contractors doing interstate work all over the state. In 2000, he started to cut back to do-



Larry's large collection of toys and memorabilia are well organized and displayed in glass cases that fill his basement.

ing more local jobs.

"I got along real well with the DOT," said Larry. "I did the work on the freeways from Des Moines to Clear Lake and from Iowa City to Waterloo. Those jobs could take about a year to complete. I had 12 to 15 guys working for me."

Larry lost his first wife in 1988. He is now married to Melanie and together they have two sons and two daughters. Larry lost two sons, both in tragic accidents. He has six grand kids and two great-grand kids.

Larry enjoys going to shows and because he has a variety of equipment, he can load up and exhibit with the features. He comes to the Albert City show about every three years and was

Your pride and joy. . . and ours!

You take special care of your classic.

We take special care in every building we make.

- ▶ Closed cell foam walls stop the transfer of moisture that can increase rust and corrosion.
- ▶ Can be sized for a single car to a complete collection.
- ▶ Many design capabilities to fit both looks and function.
- ▶ Great humidity control for painting and restoration.
- ▶ Various interior finishes can be pre-applied. Interior glass board walls can be power washed to keep clean, airy bright look.
- ▶ Solid continuous sheeting on interior is great for shelving or decorating with memorabilia.

A building made with SIPs can reduce your heating cooling costs up to 50%!

Many design capabilities for larger clear-spans and vaulted ceilings.



www.epsbuildings.com

EPS LOCATIONS:

Energy Panel Structures
102 East Industrial Park
Graettinger, IA 51342

EPS-Perryville Plant
232 Semo Lane
Perryville, MO 63775

Phone: 800-967-2130



100% Employee Owned—
100% Committed to Quality



Larry's M602 Hi-Crop that will be an exhibit at this year's show.

last here in 2009 when Rumely was the feature.

Much of Larry's collection is displayed at the Heartland Museum where he takes responsibility for the large collection of farm machinery displays.

He enjoys reading and tries to get every magazine related to antique machinery, toys and equipment. He is currently on the county board of supervisors, on the board of the Antique CAT Club and is a member of MMCI. He and Melanie hosted the MMCI winter meeting in March 2012.



A small part of the Maasdam toy collection.

Interesting To Visit . . .

Heartland Museum

Hwy 3 West & 9th St. SW, Clarion, Iowa

Open year-round by appointment.

Summer hours Wednesday and Saturday from 1:30 to 4 p.m.

Please allow at least two hours to see everything!

Call 515-602-6000 to arrange for a personal tour.



Stay informed!

Articles on Enthusiasts, Activities,
and the MMCI Newsletter



See us for your MM Vinyl
Replacement Decals

Published four times per year.

U.S. Mailing Address: \$20 per year or \$38
for two years

Canada: \$24 per year

Other Foreign Countries: \$28

RM DISTRIBUTORS

3693 M. Ave.

Vail, IA 51465

Phone: 712-677-2491

mmcorresponder@westianet.net

Back Issues, Classified Ads and Display Ads available.

VernaBelle and Carl Bellows to serve as Feature Parade Marshals

This year's feature parade marshals are VernaBelle and Carl Bellows of Newell. They will lead the parade each day at 10:30 a.m.

Both have helped with the show for many years, going back to about 1981. It was Carl's dad that started going and the Bellows then started participating. Carl helped for many years with lining up tractors, working in the saw mill and threshing.

"I liked it all," said Carl. "The machinery is the best. That is what I like."

For VernaBelle, working in the school house was something she enjoyed. "It is a country school like the one I attended for eight years," she said. "Meeting the people from all over was fun. They would stop in and visit, that was the part that I liked. The food is always good and of course, I should mention the homemade ice cream which is always good!"

Carl retired from farming about 10 years ago and VernaBelle served as the secretary for the United Methodist Church in Newell for over 30 years.

Over the years they farmed, raised hogs and did custom corn shelling and plowing with his dad.

"We wore out three or four shellers. We did it for the neighbors," explained Carl. "About the time we wanted to go



VernaBelle and Carl in their home north of Newell and just two-miles from Carl's home place.

somewhere then someone would call wanting to shell corn."

Minneapolis-Moline was the tractor used on the farm and he is hoping that his 670 M-M will make it into the parade.

The Bellows, who have been married for 63 years, have a son, Bob, living in Pocahontas and a daughter, Nancy, in Des Moines. "They all reserve days off for the show," said VernaBelle. "We might not see them at Christmas but we always see them during the Threshermen's Show!"

"We took our family to the show when they were young and in strollers. They knew where the oil station was and if they couldn't find us, we all knew to go there," she laughed.

"The show is a place where you can go and turn your kids loose and not have to worry about them," said Carl.

Their grandsons, Shawn Frederiksen and Jon Bellows, help with the tractors and always look forward to attending the show.

The Bellows feel the honor of being the parade marshals. "I think it will be fun. It's a responsibility," said VernaBelle. "But we and our family think it is an honor. I think the whole family will be there."



TOGETHER WE CAN

See us
for your
grain and
agronomy
needs



Newell & Sulphur Springs
Phone: 712-272-3312
Fax-712-272-3502
www.fccoop.com



LUNDELL
CONSTRUCTION CO., INC.

Excavating • Heavy • Grading • Material Contractors
Water-Sewer • Tiling • Trucking

1420 East Richland St.
Storm Lake, IA
Phone: 712-732-4059



Myrna and Marlowe Feldman are Threshermen Parade Marshals

Best known for their homemade ice cream, show visitors will recognize Myrna and Marlowe Feldman as they lead the Threshermen's Parade each day at 4:30 p.m.

The Feldman's have been involved in the show for many years. Marlowe served on the board for 18 years—most as president—and also enjoyed the steam engines. Myrna helped with the ice cream, the food stand and the Svenska Stuga.

Over the years they have become known in the area for their homemade frozen treat. "We started making it in a two-gallon freezer," explained Myrna. "Then we went to two five-gallon freezers and now there are three five-gallon freezers.

"There is no secret recipe," they claim. "You just have to use good ingredients. If you put good stuff in, you get good stuff out!"

Marlowe says he has always been inventing things and he worked with the late Keith Sundblad on a way to stir the ice cream freezers using a twine tied to a wheel.

They still manage the ice cream stand during the show and assist when they can when the Threshermen serve ice cream at other local events like Summerfest.

Marlowe and Myrna farmed for over 45 years including raising pigs. They retired in 1998 and in 2004 they left the farm and moved into Albert City.

Recently the Feldmans celebrated their 60th anniversary with a celebration on July 1. "We figured fifty years is a blessing and everything else is a bonus," said Myrna.

They have two children: Kirk in Carbondale, Colo. and Jane in Ida Grove.

They both keep busy in their spare time. Myrna enjoys reading, knitting, gardening and volunteering. Marlowe enjoys singing, doing volunteer work and serving on the boards of the Pleasant View Care Center and Evangelical Free Church. "I have always enjoyed singing. At one time I thought of doing it professionally, but I decided I'd rather go broke farming than live as a professional singer," said Marlowe. "I want to stay as active as I can to be of service to others."



Myrna and Marlowe Feldman at home in Albert City.



The ice cream stand is one of the favorite stops for show visitors. Each year they serve up over 400 gallons of the cold treat.

Woodley Insurance and Real Estate

"Satisfied Policyholders"

☞ **For All of Your Insurance Needs** ☞

137 S. Third Street
Laurens, IA

Phone: 712-841-4568
or 800-480-4568

Lighthouse Inn

1601 E. Lakeshore Drive
Storm Lake, Iowa

Phone: 712-732-5753

www.lighthouseinniowa.net

Across from King's Pointe Waterpark

Thayne Benz—Proprietor



Potato Patch is new this year

Kids of all ages can get ready to dig in the dirt! A large potato patch has been planted and will be ready for the kids to gather their own sack of potatoes.

The event will take place following the children's games at about 2 p.m. each day or as announced. The potato patch is located on the far south end of show grounds.



David Glienke of Greenville and his team of horses made a few rounds of potato planting earlier this spring.



The cut seed potatoes fall into the small elevator cups which turns and plants one at the designated intervals.



Randy Koenig and others planted about 150 pounds of seed potatoes on April 1, 2012. The planting and other field work has been done with horses.



Loyal members of Ag Partners team - Brothers Tim & Randy Heuton have a combined 56 years of experience.

The Right People.



www.agpartners.com

OUR LOCATIONS

Albert City • Alta • Alton • Calumet • Ellsworth • Emmetsburg
 Fonda • Hartley • Hospers • Matlock • Maurice • Merrill
 Orange City • Royal • Sheldon • Sioux Center • Sutherland

Serving the Albert City area for over 46 years!

Pleasant View Home and Countryside Living Independent Apartments



Phone 712-843-2237 • 410 Spruce Street

For the Virgils, Tractor Collecting is a Family Hobby

Chuck and Shirley Virgil of Sutherland, IA have worked hard this year to round up fellow M-M collectors to participate in the show. Along with other family members, they'll be bringing quite a bit of equipment and look forward to participating in the many field activities.

The Virgils have found that collecting has become a family hobby. "For us it is a family hobby," said Chuck. "For my brothers and me and our grand kids, it bridges the gap. Jackson knows all of his great uncles and he knows all of the equipment we have."

Jackson enjoys coming out to the farm from his home in West Des Moines so he can help work on the equipment. He listed off the line up of equipment: a 302, Twin City J, two U's, Big Mo 400 and 500, 445 wide and narrow front end, 602, Z, ZB with a planter along with a variety of lawn tractors.

"I didn't really have a plan to start collecting Minneapolis," said Chuck. "My first tractor was a 50 John Deere. I traded it for a Minneapolis and they just started following me home. And then I got my brothers involved."

"My dad had a M-M corn sheller. In 1952 he bought a U and a sheller and did custom shelling. He wore out three shellers before he retired."



Chuck and Shirley Virgil with their grandchildren, Cassidy, age 5 and Jackson, age 7.

Chuck served on the board for the Minneapolis-Moline Collectors and is looking forward to seeing many friends during this year's show. "We're so close to the site and it is a good show. We want to help make it a good show by getting lots of M-M exhibits. I think the field work will be fun. I've had the sheller about six years and have only used it once."

Four of Chuck's five brothers will be joining him at the show.

Chuck and his wife Shirley enjoy their life on the farm where they rent out the crop ground. Their life's work was in the dental equipment business where they served dentists in a 200-mile radius. After selling that business they bought the farm from family and farmed for about ten years.



Look for a similar display of sewing machine tractors and a scale model sheller made by Robert Virgil or Norton, Kansas.

Crossroads of Albert City

Congratulations Threshermen on 42 years!



Bring in this ad and purchase one
Large Single Topping Pizza

\$9.99

LIMIT ONE PER COUPON

Your Choice:
Budweiser, Bud Light,
Mich Golden Light
12 pack cans
Busch Light
2-16 oz. 6 packs

\$10.00



10 lb. bag

\$2.19

ATM

5101 230th
Albert City, IA
712-843-5549



**SLIEFERT FUNERAL HOMES
& CREMATION CENTER**

"You Can Put Your Trust in Us"

ALBERT CITY • MARATHON • SIOUX RAPIDS • STORM LAKE

www.sliefert.com

Phone: 712-732-5010

E-mail: info@sliefert.com



During the 2011 show, Carl Tuttle and the incline ramp were quite an attraction. Carl came from Howell, Michigan with his 40-horse Case engine to perform on the ramp. The incline is about 40 feet long with the top platform about 12 feet high.

Iowa's #1 Ag Bank

Our eighth year!


UNITED BANK
 of IOWA
The Difference is Here!

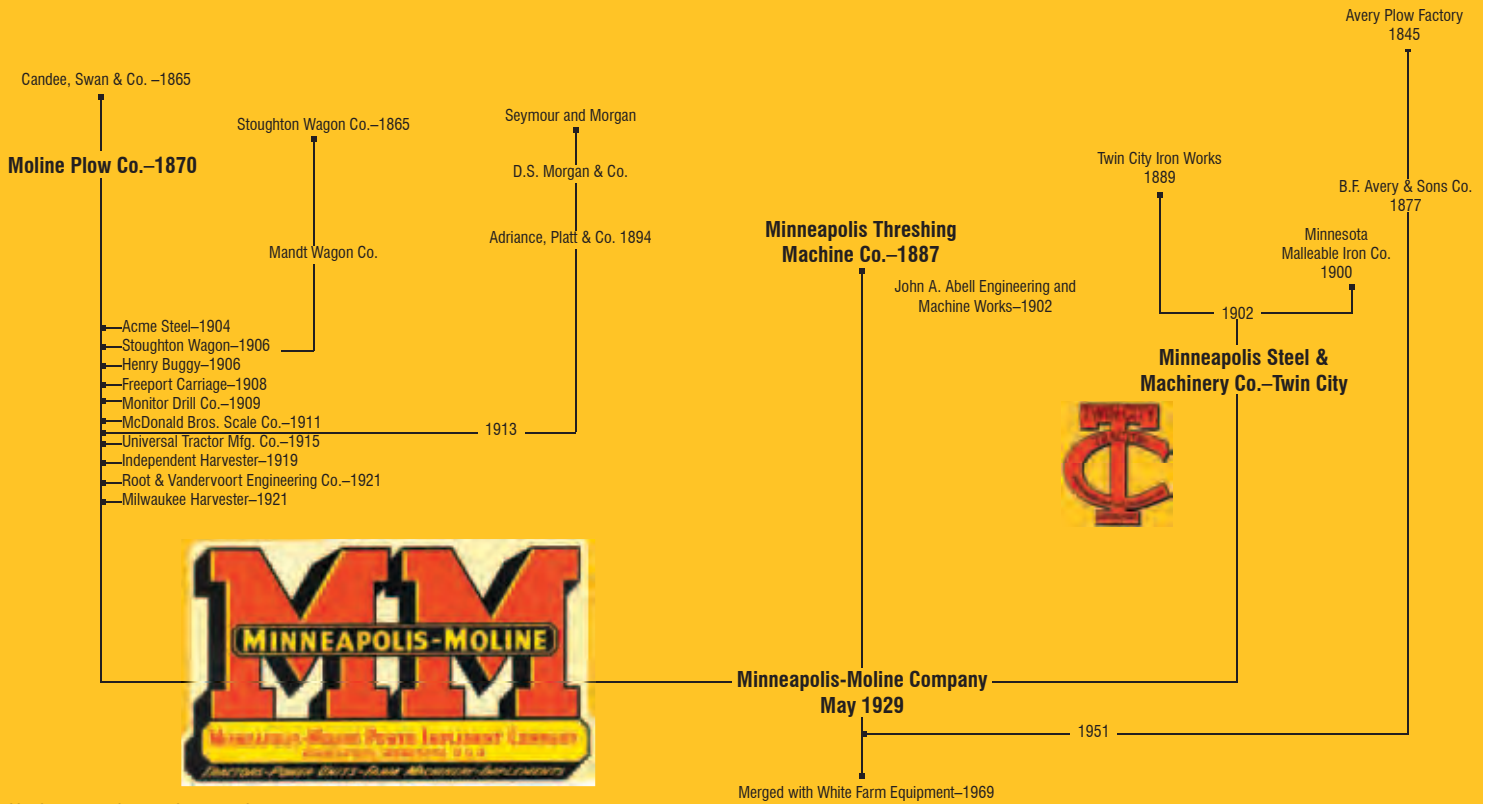


www.unitedbk.com

Member FDIC

Arthur • Carroll • Charter Oak • Churdan • Denison • Dunlap • Fort Dodge • Galva • Glidden • Harlan
 Holstein • Ida Grove • Kingsley • Kiron • Lake City • Lohrville • Moorhead • Merville • Odebolt
 Pierson • Rockwell City • Sac City • Schleswig • Storm Lake

Minneapolis-Moline Historical Timeline



SOURCE: NE Indiana Steam and Gas Assn., LaGrange, Indiana

Valero Renewables - Albert City For your corn marketing needs

Contacts:

Andrew Lukkes 712-843-5141 (Grains Manager) & Niki Ayers 712-843-5130 (Commodities Assistant)

website: dpp.farmstech.com/valero



Albert City Museum Offers Large Complex of Historical Displays



The Heritage House is an air conditioned building with two levels of displays that are well organized, bright and clean.

Located just north of downtown in Albert City visitors will find the Albert City Museum. The complex includes six buildings with about every type of historical artifact on display.

The Museum was chartered in 1974 and opened for business on July 4, 1976 with just the house. It was one of the first homes built in town.

Visitors can walk through the house and see it as it would have appeared over 100 years ago. There are many family photos and histories throughout. The wood trim changes throughout the house to depict how the designs changed over the years. Other special items are: braided area carpets, a fainting couch, quilts, linens, dinner and glassware, a Victrola phonograph and records, a children's room with dolls, cradles, and toys; a sewing room that shows early clothing patterns and delicate lace.

The Depot building was named to the National Register of Historic Places in 1980. It was here a shoot-out claimed the lives of three people after the robbery of the Greenville Bank. The bullet holes can still be seen in the walls and one of the bank robbers' guns is also on display.

Other displays in the Depot include a large collection of fine china and glassware, a collection of Hummel figurines and

Continue Your Passion For Agriculture

WITH IOWA LAKES COMMUNITY COLLEGE

1-866-IA-LAKES
www.iowalakes.edu

Join the Tractor Ride
Thursday September 5th!

Go to
www.iowalakes.edu/foundations
for more information!

Emmetsburg • Estherville
Algona • Spencer • Spirit Lake

IOWA LAKES
COMMUNITY COLLEGE



plates, an old pump organ and console music boxes.

The freight room holds a rare collection of restored cars: an 1899 Locomobile, 1904 Oldsmobile, 1909 Sears, 1910 Model T Ford, 1910 Stanley Steamer and a 1919 Electric Car.

The second floor of the Depot features displays from pioneer doctors, dentists, professional records and other vintage furnishings.

The Country School was built in 1875 and was used until 1922. It was originally the Fairfield Township No. 2 School and was located just west of Albert City.

The School is filled with authentic school furniture, old maps and cases. There is also a large collection of books and report cards, an upright piano and an old heating stove.

In 1983, Martin and Gladys Anderson built a new building on the complex which is now known as the Anderson Mercantile. This building has an old-time grocery store, pioneer laundry equipment, an American Flyer train set, a printing press, an old voting machine, cameras, handcrafted items and a large display of ladies hats.

The Heritage House was built in 1999 and offers two levels of vintage displays. Items include the Thieman Tractor and other locally manufactured items from Metal Master and Superior Manufacturing.

There are also displays of authentic farm machinery, tools, advertisements, souvenirs, a military display, organs, athletic uniforms, fire fighting equipment and a large church display.



Recently, Stu Johnson built a replica of Gwen Johnson's 1870 homestead house which is now part of the museum complex. Marilyn Bolte is the museum curator and board secretary.

"People can't believe what a large complex we have," she said. "All of our items are tagged with credit to the donors and all items are numbered and recorded."

The Museum has a nine-member board of directors which meet monthly. Dick Aronson serves as president.

During Threshermen's Weekend, the museum is open Friday from 1 to 5 p.m.; Saturday from 10 a.m. to 5 p.m. and Sunday from 1 to 5 p.m.

Regular hours are Sunday from 2 to 5 p.m. during the summer. Or make an appointment to visit anytime by calling, 712-843-5858 or 712-843-5684. Admission for adults is \$5.



Enjoy the rare collection of restored cars that belonged to Ed Sundholm located in the Depot.



Fairfield No. 2 Country School was located just west of Albert City and was used until 1922.

Each room of the 1900s House is authentically decorated. Here, the bridal room has displays of beautiful gowns and fancy clothing.



Enjoy another great show!



14 locations serving your agricultural needs
4 Car Care Centers plus overnight fueling available

Go with the Pro!

www.procooperative.com

Becky L. Johnson

Sales Associate
Cell: 712-299-6551
beckyj1@ncn.net
Donna M. Hudson
Broker



Serving Albert City and the Surrounding Areas Since 1981

For all your realty needs

321 N. Main
Pocahontas, IA 50574
Office: 712-335-3817
Cell: 712-358-0633



www.hudsonrealtyiowa.com

Fun for the Kids



One of the original reasons the show started 42 years ago was to teach children about old-time, traditional farming. It remains one of the main purposes for the show. This is a place where kids of all ages can play in the dirt, touch the corn stalks and feel the grain as it pours into the wagon.



We're proud to call Emmetsburg home.

At POET, we know that innovation is the product of hard work and determination. The same values make Emmetsburg a great place to live and work.

POET
biorefining

poet.com/emmetsburg

Iron Bacteria?

Rusty Water?

Manganese?

Hydrogen Sulfur?

What's YOUR Water Problem?

Let us show you how our Dry Pellet Chlorinators can treat these and other nuisance well water problems. Give us a call, or visit us online at www.bbchlor.com

B&B
CHLORINATION

Phone: 800-331-4808
Tim Behrens

Loren Book enjoys Moline Universals

Loren Book has been collecting Minneapolis-Moline equipment and memorabilia for about 25 years. He enjoys a nice display as part of his workshop and is eager to share his collection with others. He and his wife, Ruth, held an open house earlier this year to coincide with the MMCI winter meeting.

“I decided early on to stay focused on M-M,” said Loren. “I like the older stuff. At first I started on the early 50’s and then got into the Universal which was used for everything.”

Loren’s wife Ruth also shares the hobby and is responsible for taking care of the MMCI website. Loren also uses the computer as he tracks potential purchases on E-bay.

“My favorite part of collecting is the search,” he said. “You may look for something for ten years and then its right there in front of you. I am looking for a 2-cylinder Moline Universal. I have a couple of leads but no one wants to break loose of them.”

Loren is currently restoring a 1960s forklift. He gets the help of Dick Burns, an ISU student who comes one or two times a week to help out. Dick is a member of the ISU Antique Tractor Club which comes out to Loren’s farm to work on their restoration projects. The club just got running a Model H Farmall and last year they worked on an M-M 47ZTU.

Loren grew up near his current farm north of Ames and attended Iowa State. He and Ruth have three daughters and three granddaughters. The Books attend two or three shows a year and try to participate in both of the M-M organizations. He served on the MMCI Board of Directors for a number of years including serving as president.



Loren holds a picture of the dealership his father owned in Nevada, IA from 1949 to 1959.



Three of the Moline Universals from the 1920s owned by Loren.



CAMP BEAN

Bed & Breakfast


“Come Listen to the Quiet”

Innkeepers
Merlynn & Andrea Bean

Phone: 712-843-5803
4955 210th Ave., Albert City, IA
www.campbeanbb.com

Just 1/2 mile north of the show site.

Congratulations AC Threshermen
on your 2012 show!



DFS has earned a national reputation for its exacting quality standards, aggressive innovation and unwavering commitment to exceed customer expectations. We produce over 600,000 tons of feed annually for integrated and independent swine and turkey producers. On-site ingredient testing, risk management, and formulation makes DFS more than a feed supplier—DFS is your value adding partner.

DFS is your value adding partner



Phone: 712-272-3396
167 West First St. • Newell, IA

Come Visit Us At . . .



The Straw Horse LLC

Enjoy the Difference—

- Crystal • Gifts
- Home & Swedish Decor

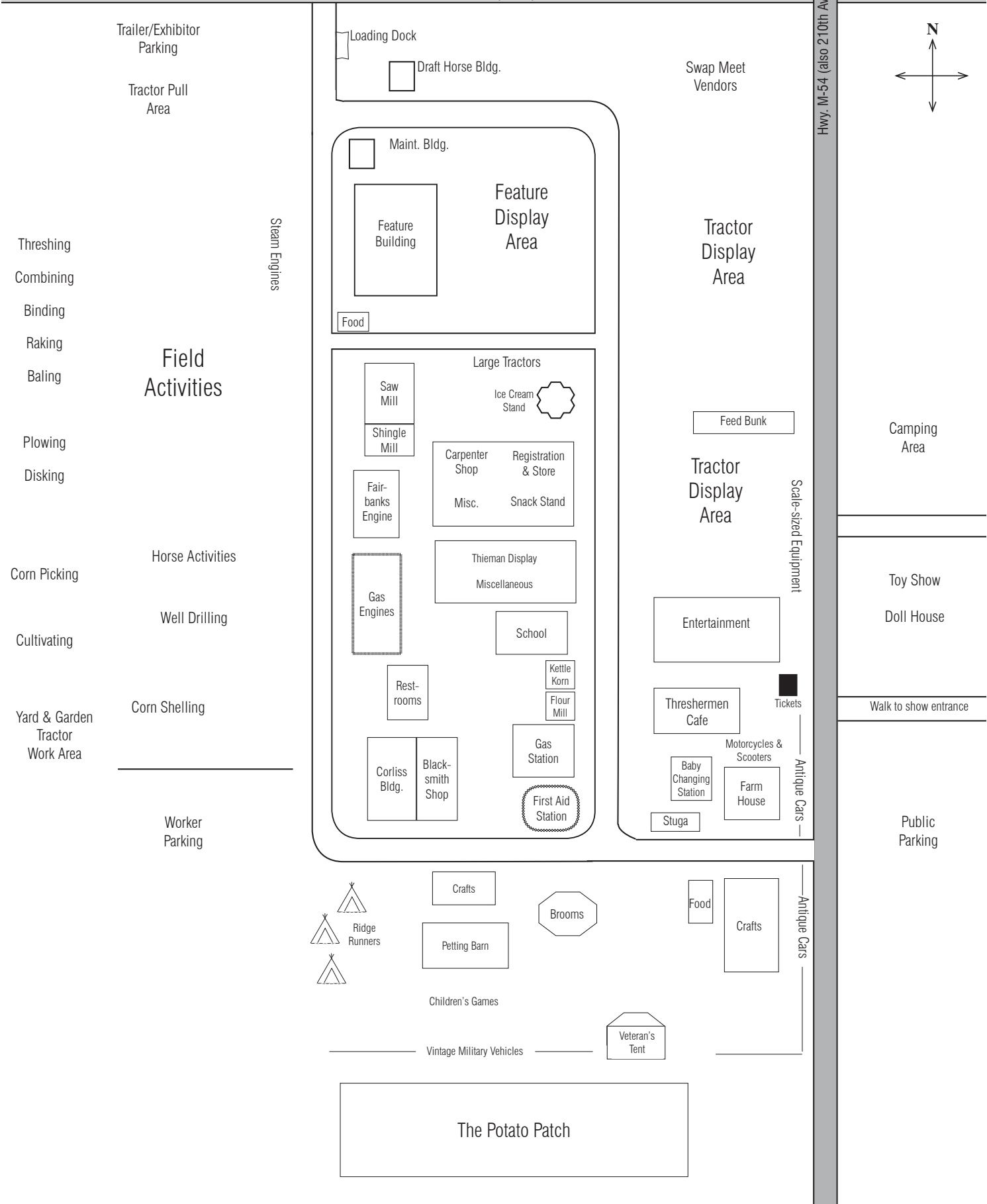
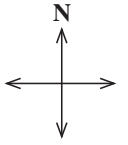
Hours: Tue-Fri. 9:30 a.m. to 5 p.m.;
Sat. 9:30 a.m. to 11:30 a.m.

Main Street • Albert City, Iowa
Phone: 712-843-2225

ALBERT CITY THRESHERMEN & COLLECTORS SITE

500th Street (gravel)

Hwy. M-54 (also 210th Ave.)



Trailer/Exhibitor Parking

Tractor Pull Area

Loading Dock

Draft Horse Bldg.

Swap Meet Vendors

Maint. Bldg.

Feature Building

Feature Display Area

Tractor Display Area

Food

Field Activities

Large Tractors

Saw Mill

Ice Cream Stand

Shingle Mill

Carpenter Shop

Registration & Store

Fair-banks Engine

Misc.

Snack Stand

Gas Engines

Thieman Display
Miscellaneous

School

Rest-rooms

Kettle Korn

Flour Mill

Gas Station

Corliss Bldg.

Black-smith Shop

First Aid Station

Feed Bunk

Tractor Display Area

Entertainment

Threshermen Cafe

Tickets

Baby Changing Station

Motorcycles & Scooters

Farm House

Stuga

Scale-sized Equipment

Antique Cars

Camping Area

Toy Show

Doll House

Walk to show entrance

Public Parking

Threshing

Combining

Binding

Raking

Baling

Plowing

Disking

Corn Picking

Horse Activities

Well Drilling

Cultivating

Yard & Garden Tractor Work Area

Corn Shelling

Worker Parking

Crafts

Brooms

Food

Crafts



Ridge Runners

Petting Barn

Children's Games

Vintage Military Vehicles

Veteran's Tent

The Potato Patch

2012 SCHEDULE OF EVENTS

Special Event Schedule:

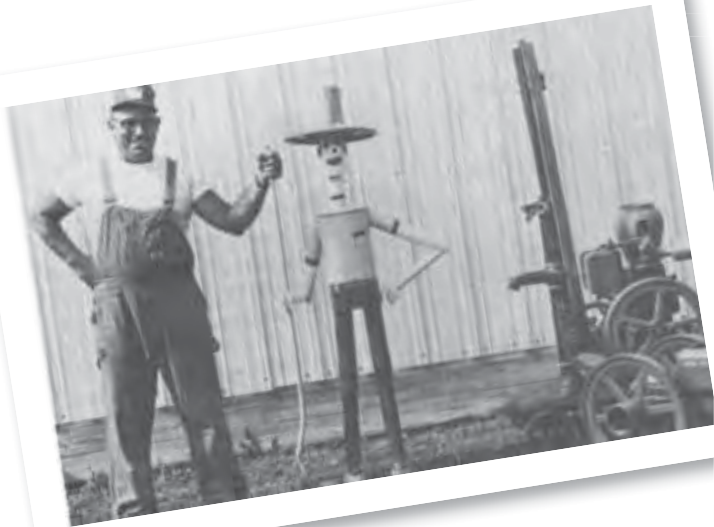
THURSDAY					
Tractor Ride, all makes welcome	1:30 p.m.	Leave site	Kids Pedal Pull	10:00 a.m.	North of Craft Bldg.
FRIDAY:			Tractor electrical seminar	1:30 p.m.	North of feature bldg.
Kiwanis Pancake Breakfast	7:00–10:30 a.m.	Feed Bunk	Entertainment –		
Opening Ceremony	9:00 a.m.	Flagpole by School	Kelsey Klingensmith	12 noon	
Tractor electrical seminar	9:30 a.m.	North of feature bldg.	Kooi Family	1:00 p.m.	Entertainment Shelter
Entertainment –			Pigs and Clover	2:00 p.m.	Entertainment Shelter
Cletus Goblirsch	12 noon	Entertainment Shelter	Talent Show	3:00 p.m.	Entertainment Shelter
Kooi Family	1:15 p.m.	Entertainment Shelter	Minneapolis-Moline Banquet	6:30 p.m.	Marathon Com. Center
Cletus Goblirsch	2:30 p.m.	Entertainment Shelter	SUNDAY:		
Kooi Family	3:30 p.m.	Entertainment Shelter	Kiwanis Pancake Breakfast	7:00–10:30 a.m.	Feed Bunk
M-M Fun Pull	after the parade	Tractor Pull Track	Church Service	9:00 a.m.	Entertainment Shelter
SATURDAY:			Tractor electrical seminar	11:30 a.m.	North of feature bldg.
Kiwanis Pancake Breakfast	7:00–10:30 a.m.	Feed Bunk	Entertainment –		
Antique Amateur Tractor Pull	9:00 a.m.	Northwest Field	Albert City Community Band	12 noon	Entertainment Shelter
Antique Appraisal Fair	9:00 a.m.	Entertainment Shelter	Kelsey Klingensmith	1:30 p.m.	Entertainment Shelter
			No Name Polka Band	2:45 p.m.	Entertainment Shelter

Daily Events for Friday, Aug. 10, Saturday, Aug. 11 and Sunday, Aug. 12

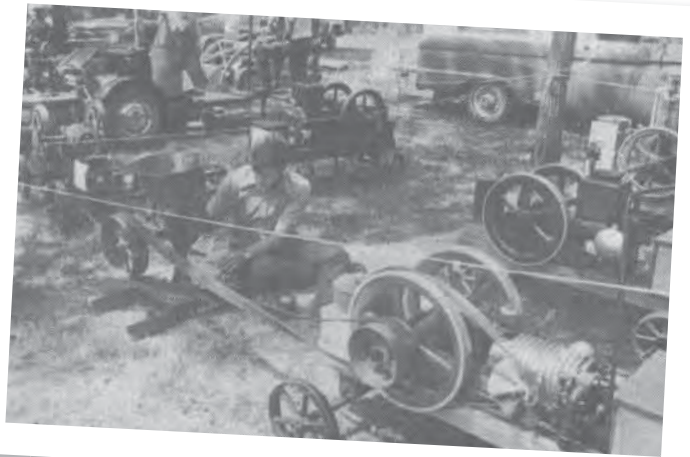
WHAT	WHEN	WHERE
Registration	Upon Arrival	Store Building
Feature Parade	10:30 a.m.	Parade Route
Games for Children	1 p.m.	South of Petting Barn
Potato digging for the kids	2 p.m.	South end of show grounds
Threshermen Parade	4:30 p.m.	Parade Route
Threshing with Steam & Gas Tractors	Periodically During the Day	West Field
Field Events	Periodically During the Day	West Field
Shingle Mill	Periodically During the Day	NW End of Grove
Saw Mill	Periodically During the Day	NW End of Grove
Blacksmithing	Periodically During the Day	East Side of Corliss Building
Flour Milling	Periodically During the Day	North of Gas Station
Horses in Various Activity	Periodically During the Day	West Fields
Making Homemade Ice Cream	Periodically During the Day	Little Red Barn
Corn Picking and Shelling	Periodically During the Day	West Field
Minneapolis-Moline Feature Displays	All Day	North Feature Building
Scale Size Equipment Demonstrations	All Day	Grounds
Antique Car Display	All Day	East & North of Craft Building
Antique Tractor Display	All Day	Grounds
Gas Engine Display	All Day	Grove Area
Threshermen Store	All Day	Store Building
Food Booths	All Day	Grounds
Vintage Military Vehicle Display	All Day	South of Petting Barn
Corliss Steam Engine	All Day	Corliss Building
Thieman Display	All Day	Brown Building North of School
Broom Making	All Day	East of Corn Crib
School House	All Day	School House
Crafts	All Day	Red Building and Corn Crib
Toy Show	All Day	Toy Building Across Road
Heritage Doll Show	All Day	Doll House Across Road
Quilt Show	All Day	Farm House
Home Displays	All Day	Farm House
Petting Barn	All Day	South of Corn Crib
Carpenter Shop	All Day	Store Building
Stormy Water Whittlers	All Day	Near Homemade Ice Cream
Combining, raking, baling, disking, plowing	To be announced	West Field
Threshing with Hand-fed Separator	To be announced	West Field
Horse Powered Well Drilling	To be announced	West Field

Remembering

The early years . . .



Harry Hansen from Nemaha has displayed gas engines at the Albert City show since 1973.



A scene from the 1975 show held at the Mabel Fredrickson farm. Gas engines displayed in forefront by Leo Eosen and son.



A very popular place during the show is the lunch stand which recently has been replaced by a larger building.

Congratulations to the Albert City Threshermen & Collectors on your 42nd Annual Show



*Real Estate, Farm
Machinery, Household,
Antiques and Appraisals*

Brown Auctioneering and Clerking Company

For personal, professional service, call:

Ronnie Brown, Auctioneer

Home: 712-283-2461
Mobile: 712-260-4029
516 8th St., P.O. Box 471
Sioux Rapids, IA 50585



Welcome Threshermen!

- Free continental breakfast
- Free high-speed wireless Internet
- Truck parking
- 15 minutes from Albert City



11 East Elm Ave.
Pocahontas, IA 50574
Phone: 712-335-4665
Toll-free: 877-335-4775
Fax: 712-335-4772
www.pocahontasinnandsuites.com



Rollin Johnson of Pocahontas, IA, driving one of his Allis-Chalmers tractors.



Ben Lind of Chaska, Minn. with his display of wind power equipment.



Mick Sundblad driving a 1917 Moline Universal.



Bob Meseck of Storm Lake driving his 1935 Farmall F-12.

Photos from the 10th Anniversary Booklet.



FIRST STATE BANK
In the Valley of Beauty on the Highway of Progress
SIoux RAPIDS, IOWA

123 Main Street Phone: 712-283-2593



**Sioux
Food Center
and Catering**

621 Highway 71 • Sioux Rapids
Phone: 712-283-2800

Sioux Central FFA Takes Over Animals in Grandpa's Barn

Visitors to Grandpa's Barn will find an entirely new exhibit of animals this year. The Sioux Central FFA has taken responsibility for the petting barn and they are looking forward to having a nice collection of typical farm animals.

The project is being spearheaded by Natasha Hickman. "I am looking forward to working with the littler kids and seeing what questions they ask," said Natasha.

"It will be fun to have the experience of sharing information with visitors. We also plan to show how animals are treated on the farm compared to the perception of how they are treated," she said.

FFA Advisor Melanie Bloom said the group has participated in petting barns at other events, but has never been responsible to organize it. "It is a crazy busy time for our organization," she said. "We have about 80 members and there will probably be about 20 of them here during the show weekend." Melanie has been the FFA Advisor at Sioux Central for ten years.

The group plans to bring a nice variety of animals, including: horses, cattle, pigs, sheep, chickens, rabbits, ducks, turkeys and some exotic poultry. They are hoping to have some laying hens so kids can see the eggs and perhaps a farrowing sow with a litter.

"We really want to show the historical details of how raising animals on the farm has changed in the past 100 years. Along with the animals, we'll have posters and displays to explain the changes," said Melanie. "We also want to show how livestock are cared for, that care given is to maintain safe and healthy animals.

"We were asked to do this and it is an important thing to do. This is making a difference in students' lives because they learn when they are in charge. They will be able to interact with the younger kids," said Melanie. "It will be an excellent experience."

Visitors should note that there will not be animals for sale during this year's show.



Left to right: Clayton Ehlers, a junior; Michelle Hagen, a sophomore; Ryan Pitts, a junior; and Natasha Hickman, a senior; all members of the Sioux Central FFA who will be heading up the petting barn this year. Look for them in the big red barn with the quilt block.

Proud to Support the Threshermen!



Let us help create your space for living!

Snook's
Carpet & Furniture, LLC.

Sioux Rapids
712-283-2584

Minneapolis-Moline Collectors enjoy Collecting and Preserving

According to the mission statement for the Minneapolis-Moline Collectors, Inc., MMCI exists for the preservation and enjoyment of the products of Minneapolis-Moline, its predecessors and related companies, for the exchange of information concerning the same, and for the education of the public as to the historical nature and role of such products. The organization was chartered in 1987.

Most club members rate the number one benefit as getting together with other enthusiastic collectors. Other benefits of becoming a member are: scholastic scholarships; preservation grants; educational projects; website with club events, information and photos; ability to introduce the younger generation to M-M products and history; a summer and winter show; an auction during the winter show and the ability to



A large crowd enjoyed the 2012 MMCI Winter Show held in Clarion, Iowa. Visitors were welcomed with an unusually warm March weekend.



exchange knowledge and skills with others of similar interest.

In 2013, the winter show will be held at Indiana, Pa. and will be hosted by Glenn Rhea. The show is April 5 through 7 with a banquet Saturday at 6 p.m.

For more information about the club, visit their website at: www.minneapoliismolinecollectors.org.

Marc G. Bertness, CCA

Certified Crop Advisor

Sales Rep for Pioneer® Brand Products



Bertness Ag Center
512 Hwy 71
Sioux Rapids, IA 50585
Office Phone: 712-283-2840
Mobile: 712-390-2840
E-mail: marc.bertness@plantpioneer.com



- Diesel Fuel
- Gasoline
- LP Sales & Service
- Oil Sales & Service
- Batteries
- Antifreeze

1115 N. Lake Ave.
Storm Lake, IA
Phone: 712-732-3261



Welcome Threshermen

While you are here, visit some of Storm Lake's best attractions!

- **Explore** the Living Tree Museum and the Tree Sculptures
- **Take a stroll** on the Hike & Bike Trail along the shore
- **Take a break** in one of our public lakeshore parks
- **Tour** The Harker House & The Witter Gallery
- **Enjoy** the lake and King's Pointe WaterPark
- **Eat** at one of our many restaurants
- **Visit** Buena Vista University
- **Go shopping**
- **Discover How Life Should Feel in Storm Lake!**

We invite you to return to Storm Lake for upcoming events! For a full listing of events, go to VisitStormLake.com



stormlake united
chamber | tourism | area development

119 W 6th St * P.O. Box 584
Storm Lake, IA 50588
(888) 752.4692

VisitStormLake.com

Swartzrock plans to Exhibit Two Rare Minneapolis-Moline models

Harold Swartzrock of Charles City plans to bring two rare exhibits to the show this year. He'll bring a 1943 Minneapolis-Moline Jeep and a 1949 Mathis-Moline VTRE tractor. He'll get some help from his long-time friend, Algie Slindee.

The 1949 vineyard tractor was manufactured in England and is very narrow, with a 36-inch width and adjustable front end that allowed it to fit between rows of grapevines.

The 1943 Jeep came from LeSueur, Minn. about 20 years ago. "Charles Sleeve was selling his collection. We went and he showed it to us. They only made about 400 and they were mainly used to pull aircraft around. Minneapolis-Moline was the first to use the word, 'Jeep'."

Harold started a Minneapolis-Moline Implement in Charles City in 1950. The dealership is now run by his son, Steve. In 1950 there were about five implement dealers in town. "They all said I was going broke," said Harold. "They didn't know that I already was."

"I still come here. When the computers came in they chased me out. I can't turn them on and I can't turn them off. But I am the gopher, going for this and going for that."

The Swartzrock Implement is now the only one in the county. They now sell New Holland, Brent wagons, tillage tools and some other short lines.

"Over the years, I had a good partner," explained Harold. "My wife did all the book work and parts for years. She knew everything about parts without needing a book. She never drove a tractor but she could find any part."

Along with son Steve, Harold and Darlene had another son who died in an airplane accident.

They have enjoyed going to many shows having gone to almost all of the Minneapolis shows all over the U.S.

Harold's collection includes a variety of other equipment including: a 670 that he sold new which was just rebuilt by his grandson last year; 2- Rs with cabs; a 302, a 3100 JetStar, a UDLX, 335s, a 2-cylinder Moline Universal; a 4-cylinder Universal that his dad owned; three Rumely Oil Pulls and an Avery undermount steam engine.

Algie and Harold have been friends since about 1955. Algie is a retired farmer and enjoys collecting Oliver and Minneapolis-Moline. He also exhibits related literature and caps.

The Cedar Valley Engine Club holds their annual thresher reunion at the farm where Harold was raised just west of town. The show is held each year over Labor Day weekend.



Harold Swartzrock stands next to his 1943 Minneapolis-Moline Jeep. This model uses combat wheels which allowed them to drive with a flat tire.



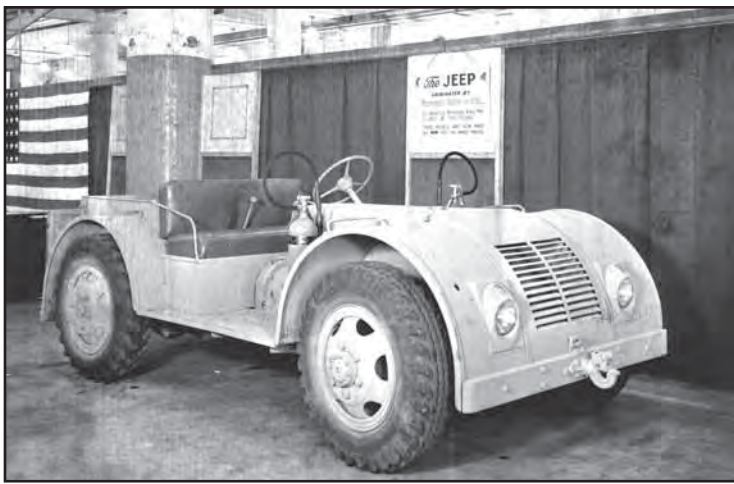
The 1949 Mathis-Moline VTRE was produced in England between 1949 and 1952. This one's serial number is 45 and it is believed to be the only one in the U.S.



Harold and his grandson, Daniel, during the July 4th parade.

Threshing Show To Visit . . .

Cedar Valley Engine Club Thresher Reunion
47th Annual Show
2012 Labor Day Weekend—3 days
7 miles west of Charles City, Iowa on Hwy. 14



Early photos of the Jeep. Top sign says, "The JEEP, originated by Minneapolis-Moline in 1938. So named by Minnesota Army Men in 1940 at Fort Ripley. Three models are now made by M-M for the armed forces."

Photos courtesy of the MM Collectors Jensen Photo Project.

CONGRATULATIONS

Albert City Threshermen and Collectors!



701 Highway 71, Sioux Rapids, Iowa 50585
www.rancofertiservice.com

Stop in and visit us!

- Gifts
- Fresh flowers
- Spring greenhouse
- Greeting cards
- Jewelry
- Home decor
- Garden flags
- and more!



Pocket of
Posies

Phone: 712-843-2226 • Downtown Albert City

Welcome

Friends of Albert City
 Threshermen & Collectors



City of Albert City

▶ Commercial
 Building and
 Grain Storage Systems



▶ On-farm Grain Storage Systems



BARGLOFF
 AND COMPANY

123 Sundown Rd.
 Storm Lake, IA
 712-732-5466

Congratulations

ALBERT CITY
 THRESHERMEN & COLLECTORS
 ON YOUR 42ND ANNIVERSARY

Hultgren Implement, Inc.



JOHN DEERE

1063 590th Street
 Storm Lake, Iowa
 (712) 732-5376
 (800) 235-0038

5698 State Hwy. 175
 Ida Grove, Iowa
 (712) 364-3105
 (800) 827-1650

Former MM Engineer plans to Bring a 445 to the Show

Mike Verhulst of Ottumwa, IA is a former engineer for Minneapolis-Moline and also farmed. While at Minneapolis-Moline, he worked on tractor design.

“I worked on updates made for 1969 production and then worked on the G950/G1050. We also started to work on the G750, an updated M670,” he said. “I was the lead engineer on the A4T project because I convinced the chief engineer that we could build a 4WD tractor using mainly current, 2WD tractor parts. I also got the job because the more experienced people already had plenty to do.”

Mike started working at the Hopkins plant in January 1968. After White Farm Equipment was formed, he worked in Charles City, IA and later in Oak Brook, Ill..

According to Mike, the advantages offered by M-M were its robust design, the use of common parts and heavy-duty, long-life engines.

Mike grew up driving M-M tractors and has always liked them which is why he collects them now. He also wants to help preserve the history of M-M. He started collecting M-M tractors in 1988 and started collecting farm equipment literature in the mid 50's. He also has a collection of farm toys.

For this show, he plans to bring a 445 tractor which is the tractor he used on the farm for a number of years. He also spent a lot of time on a 445 when he was growing up. His collection includes a number of implements and two M-M Uni-Tractors along with several other makes of old tractors.

Mike has never been to the Albert City show, but is looking forward to attending and seeing lots of friends. “I have heard many good reports about the show from others who have attended in the past,” he said. “I try to get to most of the M-M Collectors Club shows. I attend several local shows and try to get to all MMCI shows.”

When it comes to the shows, Mike enjoys seeing the old equipment that has been preserved and meeting very nice people from all over. He can appreciate the hard work it takes to restore the older equipment. “Like everyone, I did not realize the future value of many items years ago.”



Mike Verhulst of Ottumwa, Iowa drives his 5 Star in a recent parade.

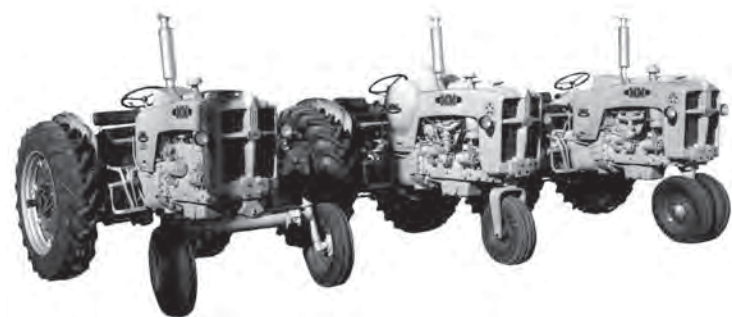


Photo courtesy of the MM Collectors Jensen Photo Project.

		Northwest Iowa's Largest Selection		
				
www.builderssharpeningsvc.com				
901 S 2nd (Hwy 59 South)				
Cherokee Iowa				
Hours 8-5 Mon-Fri Saturday 8-12 712-225-3224				

Jerred Ruble has a Passion for Minneapolis Steam

Having a passion for steam engines may be an understatement for someone who owns just about every engine Minneapolis made. Then add in other big gas engines and tractors and it's a fun time to view the collection of Jerred Ruble.

Jerred, from Hanlontown, IA, has quite a bit of his collection at the Heritage Park of North Iowa in Forest City. It is here where he and many other volunteers host the annual Steam Threshing Days each September, along with other events throughout the year.

For the Albert City show, Jerred plans to bring his 721 Minneapolis return flue steam engine which was built in 1893. He bought the engine in 2005 and spent about four years to restore it. It is the oldest Minneapolis engine to exist.

He will also bring his 1910 28 Minneapolis. "It has a Canadian Boiler," explained Jerred. "The Canadian standards were tougher. It will do 165 pounds of steam." It has a cast iron smokestack and was typically used for threshing and running the saw mill.

Jerred collects the engines mainly for show. They are used in the spring for the steam school and again in July for a smaller show at the site.

He bought his first tractor in 10th grade and over the last 15 years has been doing more collecting. His collection includes some more unknown brands such as a Greyhound Line with only about eight left, and a 1920 Flour City 40-70, one of about four left.

"Minneapolis engines were popular because they were built in Hopkins, Minn.," said Jerred. "They built over 8700 engines."

Jerred is very active at Heritage Park, a beautiful park designed like yesteryear. It is a 93 acre site with old-time buildings and exhibits. It now hosts the Threshing Festival which was originally held at Jerred's farm. "People can enjoy the site year round," said Jerred. "But the shows give us a chance to use our equipment and share the history."



Jerred Ruble stands next to his 721 Minneapolis return flue steam engine which was built in 1893.



This Minneapolis 28 Steam Engine was built in 1910 and has a Canadian Boiler.



A 20-horse engine that was once owned by Jerred's grandfather.

Interesting
To Visit . . .

Heritage Park Steam Threshing Festival

Forest City, Iowa

29th Annual Show Featuring International Harvester

September 15-16, 2012

<http://www.heritageparkofnorthiowa.com>



Join the Threshermen's Tractor Ride Thursday

The Threshermen will host a tractor ride on Thursday afternoon which is open to all makes, ages and models of tractors (and riders).

Minneapolis-Moline enthusiasts will have a ride to the show site starting at the Chuck Virgil farm near Sutherland. They will take a scenic route to the grounds and arrive about noon. At about 1:30, all tractors will leave the grounds and head to Albert City. There will be a tour at the Albert City Historical Museum which is a large six-building complex.

The ride will then go to Marathon to visit the L, M & O Rail-

road Museum. The museum features a depot from Pocahontas that is fully outfitted including the tools, ticketing and passenger areas. There is 1,000 feet of train track with working lights and switches. Visitors can actually take a ride around the track.

The museum includes an all-wood executive car from the 1880s and much memorabilia from Marathon including an original ice house and shoe shop.

Riders will enjoy homemade ice cream before heading back to the show grounds.

Enjoy a Break under the Shade and Watch a Variety of Musical Talent



An afternoon talent show will be one of the highlights in the entertainment lineup this year. The competition will start at 3 p.m. on Saturday. The show will be divided into three age brackets and cash prizes will be awarded. Participants are encouraged to pre-register by calling the show office, 712-843-2076.

Threshermen: you have built
a great show over the years.
Congratulations!

Sioux Lumber

Phone: 712-283-2820 • 112 1st. Street • Sioux Rapids

Other entertainment under the shelter will be:

Cletus Goblirsch is a concertinist from New Ulm, Minn. and he will perform at 12 noon and 2:30 p.m. on Saturday.

The **Kooi Family** will perform on Friday at 1:15 and 3:30 p.m. and again on Saturday at 1 p.m.. The group is made up of Nikolass, 15; Meia, 14; Joseph, 14 and Anika, age 13. The family has been performing for over five years and sing southern gospel and hymns. They are the children of Terry and Julie and come from Inwood, IA.

Kelsey Klingensmith will perform on Saturday at 12 noon and again on Sunday at 1:30 p.m. The name Kelsey has come to be quite familiar to Western Iowans, and that reputation is growing fast around the country as this young, talented 13 year old singer songwriter begins her journey towards her lifelong dream of becoming Nashville's newest singing sensation. A prodigious songwriter and musician, Kelsey has already written well over 100 songs by age 12 and released her first all original album at age 11. Kelsey's vibrant and powerfully expressive sound coupled with a country cry captures her lyrics and delivers them in a way that touches and inspires those who hear her. Kelsey's new all original album "Blue Jean Girl" produced by Jimmy Nichols, musical director for Faith Hill, is slated to be released in August of 2012. Jimmy Nichols says, "If I could imagine how artists like Carole King, Carly Simon, and Janis Ian started out, it would be Kelsey. She has the heart and soul of a true musical artist." To learn more about Kelsey, visit her site at: www.kelseysmusic.com.

Pigs and Clover will perform on Saturday at 2 p.m. Folk singer-songwriters Matt and Jamie Kearney are from Iowa City. Matt grew up in Storm Lake. Their music includes original tunes and features guitar, banjo, mouth harp and drums. The band is developing a strong following in eastern Iowa with its creative and socially conscious live shows and recordings.

The **Albert City Community Band** will perform at 12 noon on Sunday and provide music during the worship service.

At 1:30 p.m. Sunday, the **No Name Polka Band**, led by Norm Hogrefe of Storm Lake will perform.

New Display of Vintage Motorcycles



This 1967 350 Yamaha will be part of a vintage bike display on exhibit this year. The display is being organized by Steve Milton, operator of Milton Cycle in Fostoria, IA. Along with other models, he expects to show a 1969 Triumph Trident and a 1974 MZ that was built in East Germany.

Learn about Electrical Systems during Daily Seminar

Bob Virgil of Norton, Kan., will be doing a seminar on older tractor electrical systems.

He will go over the four electrical systems: generator, starter, ignition and lights. "I'll give a good overview of how the systems work, demonstrate how the circuits work and give some trouble-shooting techniques," said Bob.

He will define the basic electrical terms used and will make a comparison to how a water system works to make it easier to understand.

"Understanding the grounds on older tractors confuses a lot of people so I'll simplify that. I will go over alternator connections, generator/alternator conversions, and common every day things that old tractor folks encounter."

The seminar will last about an hour, but Bob is willing to go longer if people have questions or specific problems to discuss. It will be held in a tent north of the feature building.

Bob spent about 17 years working in a radio/TV shop, then went to work for the Kansas DOT working on radio systems. After he retired he started studying the systems on old tractors and spends a lot of time online following the questions and problems that the general old tractor collector runs across.

He will also exhibit a display of miniature corn shellers that he made in four different sizes along with some homemade sewing machine tractors.

A good neighbor to the Albert City Threshermen and Collectors Show.

Congratulations on your 42nd Annual Show!



JOHN DEERE Laurens Equipment

SALES, PARTS AND SERVICE

Phone: 712-845-2643 or 800-642-6348

Hwy. 10 West in Laurens

Sixta's Corn Sheller will be put to Work

The Sixta family will be making a few trips from their farm in Northwest Iowa to the show site so that they can share some of their Minneapolis-Moline machinery.

They plan to bring an M-M corn sheller which is mounted on a 1941 Ford chassis. The sheller was from the late 1950s and they bought it about 7 years ago.

The Sixtas—Roger and his sons, Grant and Clint—have quite a collection of M-M equipment and sometimes they forget who owns what piece.

“We all work together on our collecting,” said Grant. “But sometimes we have to stop and think, ‘is that yours or is it mine.’”

Grant recently bought a 1964 M-M combine that will be coming to the show. The 2890 model sat outside for only three years and is in good condition.

Grant is the plant manager at Northwest Ready Mix in Ocheyedan. Clint drives truck and Roger is retired. They all enjoy going to shows and we can expect to see them driving around in their black 10-passenger bus which they use for family outings.

Roger and Grant agreed that the hunt for the treasures in the grove is what makes collecting fun and M-M is a brand that not everyone is collecting.



Grant Sixta with his father, Roger, next to the M-M corn sheller.



Above is the 2890 Minneapolis-Moline combine that will be used at the show.



At right, Roger and Grant Sixta next to Roger's 1966 U302. Roger and his wife went on 17 tractor rides last year.

The Sale Barn Realty & Auction

Award Winning Auctioneers
and Real Estate Professionals

Rick and Kendra Winegarden, Owners

Office: 712-335-3117

Cell: 712-358-0974

E-mail: salebarn@evertek.net

102 E. Elm

Pocahontas, IA

www.salebarn.ncn.net

We sell the earth and everything on it!

First National Bank

Rembrandt, IA
712-286-5491
MEMBER FDIC



211 Main
Albert City
712-843-2284

Clausen HARDWARE *and Service*



valspar
the beauty goes on™

- Electrical
- Plumbing
- Heating
- Air Conditioning
- Trencher
- Backhoe

Window & Screen Repairs

Steam Power

By day and night . . .



This steam engine is kept busy during the annual show. It is operated by Doug Miller. At last year's show it was used for a "spark show" on Saturday night.




Congratulations

**Albert City
Threshermen &
Collectors
on your
42nd Year!**

Serving your printing
needs with old-
fashioned service!

**Laurens House
of Print Ltd.**


Phone: 712-841-4373
117 S. Third St. in Laurens

Channel 
Seedsmanship At Work

Access to
FUTURE technology
FOCUSED
on your success

At Channel, we get to know you and your farm first. Then we use that knowledge to provide you with expert hands-on service and support and industry-leading seed products, to help you get the most out of every acre. Channel® is more than a seed brand. It's Seedsmanship At Work.™

Gary Sundblad
Seed & Technology Advisor
712-260-1145



Ask for Genuity® Traits in your Channel® Seed.
ALWAYS READ AND FOLLOW PESTICIDE LABEL DIRECTIONS. Genuity and Design® is a registered trademark of Monsanto Technology LLC.
Channel® and the Arrow Design® and Seedsmanship At Work™ are trademarks of Channel Bio, LLC. ©2010 Monsanto Company.

There's always Lots to Eat and Drink While Visiting the Show

Food has always been a part of the Threshermen's Show and this 42nd year will continue on that tradition.

The largest food stand is the Threshermen's Café just west of the gate. Here you'll find a large menu including: turkey fillets, sloppy joes, pulled pork, Polish sausage and sauerkraut, chips, and of course, homemade pie. They'll be serving donuts for breakfast. The café opens at 8 a.m. and closes in the evening after the crowds settle down.

It takes about 100 volunteers to pull off serving all of the show visitors. There are volunteers who bring pie, and many who come to cook and serve the meals.

Other food items

The snack stand located in the registration building offers stuffed baked potatoes, Polish sausage, popcorn, and candy bars.



The Threshermen's Cafe is a favorite food stop.

Located in the middle of the tractor displays you will find the Feed Bunk. Here is the place for ribeye steak sandwiches and pork burgers which are served by the County Pork Producers and Beef Producers.

Robert & Beverly Duckstein from Pasco, Wash. will cook up Kettle Korn again this year.

A refreshment stand is also located on the corner near the Feature Building.

On the south end of the grounds, the youth groups will serve pizza, funnel cakes, pop and lemonade.

The Laurens Kiwanis Club will serve a pancake breakfast each day from 7 a.m. to 10:30 a.m.

Good after a meal or anytime is the homemade ice cream served by the Threshermen. Watch them make it just north of the registration building at the Little Red Barn.

Enjoy it at the show!



pepsi**americas**

Bring your Antiques for Valuation during the Antique Appraisal Fair

For the second year, there will be an Antique Appraisal Fair on Saturday morning. It will start at 9 a.m. and go until 12 noon. There will be a short break during the 10:30 Feature Parade. Anyone can bring items for appraisal, however pre-registration is encouraged as items will be taken in the order they are registered. There is a three item limit per person and a \$3 fee per item. Pre-register by calling the show office, 712-843-2076.

Paul Brenner will be doing the appraisals. He received his certification as a Class A appraiser in 1981.

Since 1997, Paul has owned Paul Brenner Antiques in Spencer, IA. He is a private consultant for the sale of antiques and provides confidential appraisals. He continues to do major antique shows.

From 1984 to 1997 he was the owner of The Mansion Antiques in Spencer which was on the National Register of Historic Places. He did major antique shows and occasionally led seminars on specific areas of collecting during the shows. He has been listed as a reference in several national publications and has served on the Board of Advisors for a major antiques price guide.

From 1971 to 1984 he was the owner of Florine's Antiques in Arnolds Park. At the time he made regular trips to Europe

buying containers of furniture and other antiques.

Paul commented, "I have been a collector since I was 14. I paid for college by selling sweet corn and antiques!" He is a graduate of St. John's University, Collegeville, Minn.

Because of the specialized nature which requires extra time to determine their value, please do not bring weapons, jewelry, musical instruments, coins or stamps.



In 2011, Mavis Widlund had a jewelry box appraised.

Antique Appraisal Fair – 9 a.m. to 12 noon Saturday (break for feature parade)
Pre-register by calling the show office, 712-843-2076 or at the show. Items appraised in order of registration. Cost is \$3 per item with a 3 item limit per person.
Please do not bring weapons, jewelry, musical instruments, coins/stamps.

BROWN FERTILIZER your supplier of:



- Top yields • Better quality grain & forage
- Exceptional crop safety • Low volume ease of handling • Environmentally responsible

Liquid N, P & K + Micros



Excellent Pop-up, Starters, or Full Programs – eNhanco for UAN.



ACCESS for your sulfur needs

- Planter • Broadcast • Strip-till
- We can blend whatever you need

Brad Brown Office: 712-838-4847

Also - Call us for all of your Chemical & Adjuvant needs!

Visit us on the web at: www.brownfertilizer.com

IOWA ENVIRONMENT

it starts with THE ENVIRONMENT

Iowa State University Extension teaches...

Best practices in pesticide and manure application, which have a positive impact on Iowa.

Citizen-led watershed management programs to ensure clean water for generations to come.

Communities and farms struck by floods and tornadoes so they can make difficult recovery decisions.



Through ISU Extension programs, Iowans improve tomorrow's world today.

it starts with EXTENSION

EXTENSION PROGRAMS BENEFIT ALL IOWANS

A17e 2/10

Find us at www.extension.iastate.edu/BuenaVista
Iowa State University Extension – Buena Vista County
(712) 732-5056 Office Hours Monday to Friday 8:00 AM - 4:30 PM



IOWA STATE UNIVERSITY
University Extension

Healthy People. Healthy Environments. Healthy Economies.

Iowa State University Extension programs are available to all without regard to race, color, national origin, religion, sex, age, or disability

Gaylen Moore involved several ways with Minneapolis-Moline brand

Gaylen Moore has roots with Minneapolis-Moline and keeps busy with a few related ventures. His grandfather had a Minneapolis dealership in Ute, IA. Later, his family moved to the Vail, IA area where Gaylen's father farmed and had mini tractors.

"We just grew up into it," said Gaylen. He now has a large collection of M-M tractors and equipment that includes about 70 tractors. He also has a large museum of memorabilia that is neatly organized in a time line.

RM Distributors, (named after his parents Roger and Myrna), is one business that Gaylen operates. The business designs and sells tractor decals and publishes a magazine, the *MM Corresponder* which includes articles on enthusiasts, their activities, events and the MMCI Newsletter. His dad started the magazine in 1987 to keep people informed about the shows and tractor equipment. His dad served as editor until 2000.

Along with his brothers, Eugene and Marty, Gaylen also owns Mohr Equipment which includes the tractor collection.

At one time the family also operated Mohr Originals which made 1/16th scale tractors. They quit that operation about 5 years ago.

The museum was organized by Gaylen's mother about 15 years ago and is a great attraction to M-M enthusiasts.

"We meet tons of super people," said Gaylen about show attendance. He expects to bring a 1943 military vehicle, a 1957 GB-LP and an M670 with a three-bottom rollover plow.



Gaylen has a fantastic museum showing off a variety of M-M memorabilia that is neatly organized in a time line.



For more than 65 years, we have provided insurance and investment products and services to help meet your needs through all the stages of your life.

Mike Behrens, Agent

Phone: 712-843-9711 • 209 Main Street • Albert City, IA
Registered Representative/Securities and services offered through EquiTrust Marketing Services, LLC,* 5400 University Ave., West Des Moines, IA 50266, 877/860-2904, Member SIPC
*Company of Farm Bureau Financial Services



For all of your
Agricultural
Financial needs,
We're your
Community Bank



MEMBER
FDIC

Phone: 712-732-3022 • Downtown 5th & Lake



Gaylen Moore with his 1943 military vehicle that will be exhibited during the show.

ANTIQUÉ MACHINERY AUCTION

Saturday, Aug. 25
10 a.m.
At the Show Site

We've accumulated some old equipment through the years that we'd like to see in private ownership for the purpose of restoring and demonstrating.

We will also be accepting donated, as well as consigned, antique equipment for this auction. All proceeds will go to pay down our land loan. If you have items you would like to donate or consign, please give us a call. Call Board Member Mike R. at (712) 299-1045 for further details.

THRESHERMEN AND COLLECTORS SHOW

ALBERT CITY, IOWA



Proud creators of Threshermens
Shirts, Hats & Banners

Call us for all your needs.

712-732-7364

512 Geneseo Storm Lake, Iowa

Experience Trust
Knowledge

Crop Insurance is our Specialty—not our side line. We have agents who are active farmers and understand your needs.

Bob Johnson Agency, Inc.



Hwy. 3 West in Pocahontas
Phone: 712-335-3135 or 800-383-8402
www.bobjohnsonagency.com

Experience you can trust.
WHY?
Because we farm too!

- Farm Land Loans
- Dealer Loans
- Farm Machinery Loans
- Crop & Hail Insurance

The ¹ST NATIONAL BANK
Citizens
¹ST ...FOR A REASON!

East 5th & Lake Ave.
Storm Lake, IA 50588
(712) 732-5440

100 East 2nd St.
Early, IA 50535
(712) 273-5500

www.citizensFNB.com

Member FDIC. Non deposit investment products are not FDIC insured, may go down in value, and are not guaranteed by any government agency.

International Harvester is focus for 2013 Show

The International Harvester Collectors Club Iowa Chapter 5 will hold their state show at the 2013 Threshermen and Collectors Show. Dates for the show will be August 9-11.

The group is holding their 2012 show at Heritage Park of North Iowa Show Grounds in Forest City Sept. 15 and 16. This will include a consignment auction and free tours of the Winnebago manufacturing facility on Friday, Sept. 14.

The Chapters mission is: "We are a very active and growing group of people that enjoy collecting and restoring International Harvester or Farmall Machinery or related items.

We believe in preserving the history of the International Harvester Company, which was headquartered in Chicago, Ill. during the twentieth century.

We strive to support the International Harvester Archives located at the Wisconsin Historical Society, University of Wisconsin which holds a vast collection of the company." They are a non-profit 501(c)(3).

The chapter currently has about 527 members. Membership dues are \$25 which covers both state and national dues. Members receive four newsletters and the *Harvester Highlights* publication from the National organization.



It seems when the time comes for binding, the temperature rises. On this day, temperatures climbed to 100 degrees as volunteers worked in the wheat field.
Photo by Gaylen Moore



Laurens State Bank

Serving Laurens and the Surrounding Communities

Since 1935

102 S. Third St., P.O. Box 136 • Laurens, IA 50554

Phone: 712-845-2627 • www.laurensstatebank.com

MEMBER FDIC

Souvenir Headquarters

Visit our
Store in the
Registration Building
for Souvenir T-shirts,
Caps and Mugs!

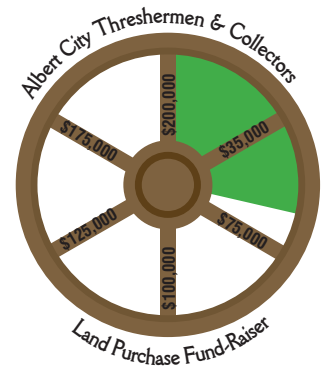
THRESHERMEN AND COLLECTORS SHOW

ALBERT CITY, IOWA

Land Purchase Fund-Raiser

In 2011, the Albert City Threshermen & Collectors Association purchased 35 acres of land to expand their show site. The added space has provided additional room for field demonstrations, displays and exhibitor parking. Generous contributions to date have raised over \$69,000.

Total funds raised to-date: \$69,155!



Consider making a tax-deductible contribution today!

Name: _____

Company: _____

Mailing Address: _____

City, State, Zip: _____

Home Phone: _____ Cell Phone: _____

If you would you like to receive Threshermen news and updates by e-mail, please include it below:

E-mail address: _____

Amount of One-Time Donation: _____

Amount of Annual Pledge: _____ Number of Years: _____

Thank you Albert City Threshermen
& Collectors for allowing us the
honor of publishing your
2012 Show Guide.



*It has been a privilege to capture
a small reflection of the show, the
volunteers, exhibitors and guests*

Beyond Broken

Connie J. Reinert

34195 320th Street Ruthven, IA 51358

Phone: 712-260-0468

E-mail: connie@beyond-broken.com

Meet the Threshermen & Collectors Board

Karl Lind
Is a co-founder. Works primarily with antique tractors, vehicles and field events. Enjoys bringing memories of the past to the present.



Gary Sundblad
Is board chair and has served on the board for seven years. He oversees security, the store, big tractors, ice cream, the food and other activities.



Robert Loving
Has worked at the show since the start. He oversees the crop ground and crop inputs, the carpenter shop, blacksmith shop, diesel engine and parking.



Mike Rebhuhn
Has worked at the show 22 years. He oversees tractors, field activities, crops, parade, tour wagons, buildings & grounds, fuel and parades.



Duane Madson
Has served on the board four years. He oversees crops, fields, threshing, signs, Svenska Stuga, antique cars, and transportation.



Kevin Olson
Is serving his third year on the board. He works with the tractor pull, horses, campgrounds, parade, buildings and grounds.



Keith Moe
Is serving his second year on the board. He oversees the toy and doll show, the petting barn and garbage detail.



Mike Sangwin
Is serving his second year. He oversees the farm house, mechanics, straw, hay and the pancake breakfast.



Steve Christ
Is serving his second year. He oversees the saw mill, well drilling, shingle mill, gas engines, scale-sized equipment and field activities.



Connie Reinert
Is serving her second year on the board. She oversees the schoolhouse, advertising, promotions, website, flowers and entertainment.



Karen Feeley
Serves as executive secretary and is in her first year of doing so. She also heads up the Threshermen's Cafe.

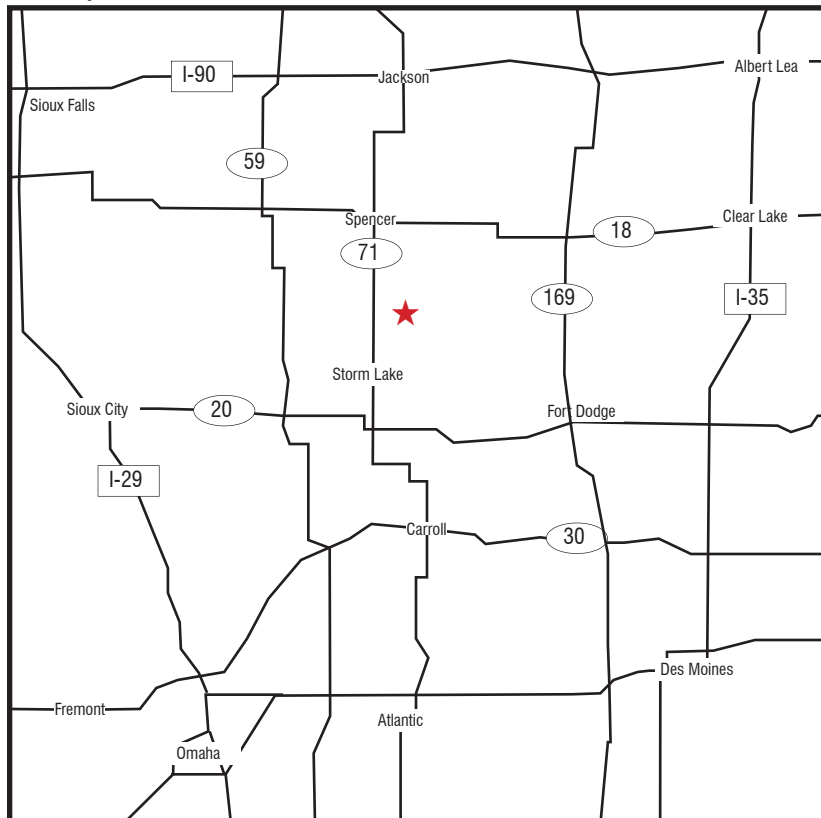


CONTACT

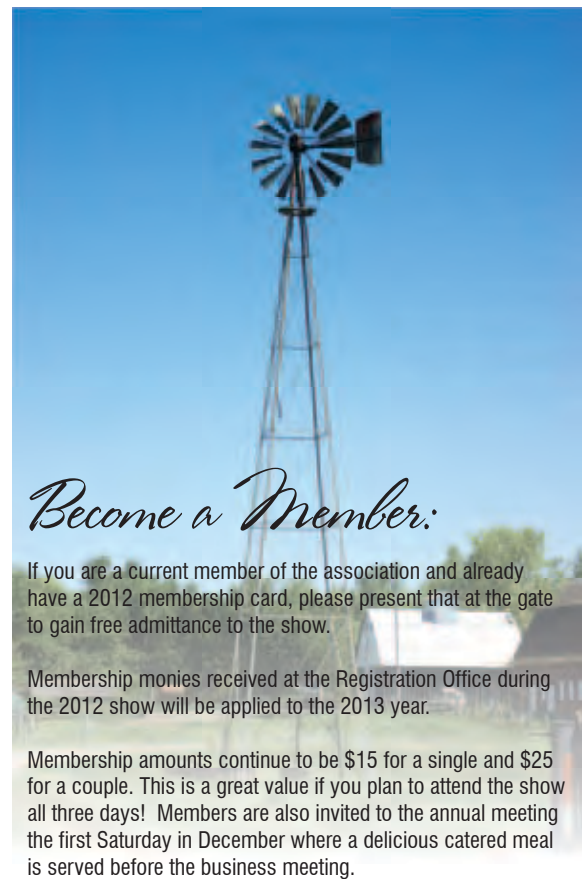
www.albertcitythreshermen.com
P.O. Box 333
Albert City, IA 50510
Phone 712-843-2076



How to find us:



Located 2 miles west and 1/2 mile north of Albert City, Iowa on Hwy. M54



Become a Member:

If you are a current member of the association and already have a 2012 membership card, please present that at the gate to gain free admittance to the show.

Membership monies received at the Registration Office during the 2012 show will be applied to the 2013 year.

Membership amounts continue to be \$15 for a single and \$25 for a couple. This is a great value if you plan to attend the show all three days! Members are also invited to the annual meeting the first Saturday in December where a delicious catered meal is served before the business meeting.

SIoux *Care* CENTER



*Special people caring
about special people.*

Experience life with . . .

- An active lifestyle
- Meaningful relationships
- Individualized care
- Daily dining choices
- Resident centered culture

- Cozy, home-like atmosphere
- Semi-private, private and deluxe private rooms
- In-house laundry
- Smoke free environment
- Ala carte menu for all meals
- Busy activity program
- Individual care plan
- Post-cardiac care
- Post-surgical care

**We offer a full line of 24-hour
skilled nursing care services.**

**Ask about joining our team
of caring professionals.**

702 Blake Street
Sioux Rapids, IA 50585
Phone: 712-283-2302
www.siouxcarecenter.com



*Good things
stand the test of*

Time

Congratulations Threshermen
on your 42nd Year!

We're always here when you need us. Even today, when you are looking for a place to collect a new friend's name and contact information!

**POCAHONTAS MUTUAL
INSURANCE ASSOCIATION**

Neighbor helping neighbor since 1891

Phone: 712-841-4569

www.pocahontasmutualinsurance.com

Laurens, IA

VETTER EQUIPMENT

135 Prairie Road / P.O. Box 1265
Storm Lake, IA 50588
712-732-4252 – www.vetterequip.com



Largest Parts Department in the Area!

We cover these major brands with a VERY LARGE parts inventory!



Other brands we support:

